

# Town of Rochester Proposed Aquifer Protection Overlay District

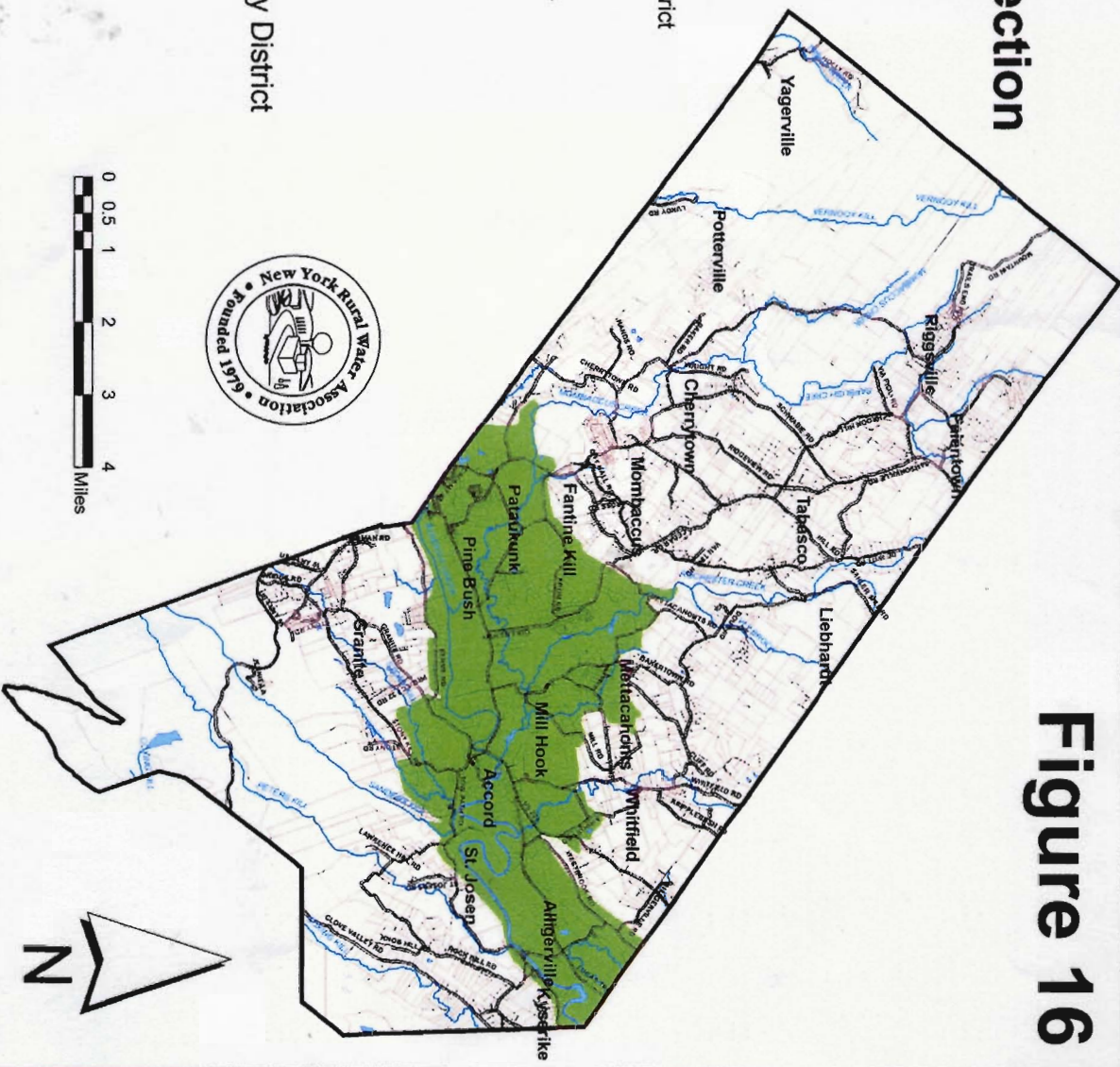
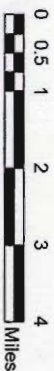
by  
Steven Winkley  
New York Rural Water Association  
2006

This map represents the Aquifer Protection Overlay District as proposed by NY/RWA. This area was delineated to consist of areas overlying the Rondout Valley Unconsolidated Aquifer System or the Karst Aquifer System. Median well yields in this area exceed 10 gpm.

## Legend



Aquifer Protection (AP) Overlay District



# Figure 16